

Health Works

ISSUE #1 | AUTUMN 2018



Health Workforce
Queensland



02 Message from the CEO

03 Our plans for 2018

04 Mackay physio awarded scholarship

05 Become a FPP Mentor

06 2018 RDAQ Conference and QRMFN Family Program

07 Key Vacancies

07 2018 RHCW

08 CPD Workshops

CEO Message

Welcome to Health Workforce Queensland's inaugural edition of Health Works, our new digital magazine.

Our aim in publishing Health Works is to share the remarkable stories of general practitioners, nurses and allied health professionals who are working in primary health care throughout remote and rural Queensland. In addition to that, we want to provide you with information on the variety of services available that can help you to support the rural communities you work in. Health Works will be published each quarter – look out for the next edition at the start of winter!

Not only am I pleased about the launch of Health Works. I'm excited that the launch of the digital magazine is in 2018, which is Health Workforce Queensland's 20th anniversary as a Rural Workforce Agency. The Agency was first contracted by the Australian Government Department of Health in 1998. Since then, there has been many changes for the Agency and within the remote and rural primary health care sector. A key change is the shift in need from the medical practitioner to the need of multidisciplinary teams working in remote and rural Queensland communities. Over the past 20 years, improvements have been made to primary health care services throughout our state, but there is still more work to be done.



Our 20th anniversary as a Rural Workforce Agency is a significant milestone that we will be recognising throughout the year and we look forward to including you in this celebration.

The 2018 RDAQ Conference is fast approaching and, as Conference Partners, Health Workforce Queensland is counting down the days to the conference. This year's theme is 'Many Journeys. Common Ground.' Don't forget about the QRMFN Family Program available at the Conference, which gives spouses, partners and children of medical practitioners the chance to connect and network. I look forward to seeing many of our readers face-to-face at the Conference.

Chris Mitchell



Our plans for 2018...

The primary health care workforce, which includes general practitioners, nurses, dentists, allied health professionals and Aboriginal and Torres Strait Islander health workers, are the frontline health services for Queenslanders.

All Queenslanders should be able to access these health services regardless of where they live. To ensure those Queensland communities can access health services close to their home, Health Workforce Queensland undertook a state-wide review of the primary health care workforce throughout remote and rural Queensland. The aim of this review was to highlight areas of the state and the health workforce that require attention and further development to improve an individual's access to health professionals.

This review was a mammoth project to undertake and it would not have taken place without input and consultation from key organisations in the rural health sector. We were fortunate to have passionate representatives from those organisations come together earlier this year to workshop the findings of the review and the next steps to take.

Where to from here? We're interacting with a variety of rural health organisations, as collaboration is crucial in seizing workforce opportunities and addressing workforce challenges in rural communities. To do this, we will be providing a variety of services to rural communities to enhance their residents' ability to access health care. The services we provide, include:

- Recruiting permanent and locum general practitioners, nurses, dentists and allied health professionals
- Supplying relocation incentives and assistance
- Providing rural orientation to relocated health professionals
- Delivering accredited continuing professional development workshops
- Providing scholarships and bursaries for further education and training
- Ongoing career pathway support

- Support for spouses, partners and children and engagement opportunities
- Rural immersion and networking events for undergraduate health students
- Localised health workforce planning

Most importantly, we will be partnering with a variety of rural health organisations to combine our services with theirs to implement initiatives that are tailored, appropriate and sustainable for the health workforce, rural communities and their residents. The above process will be cyclical, as we will undertake another review, in greater detail, early 2019.

We look forward to working with rural health organisations, primary health care services, health professionals and communities throughout the year to improve access to primary health care.

We want your stories!

If you're a general practitioner, nurse, allied health professional, Aboriginal and Torres Strait Islander health worker or practice manager we want to hear from you!

The Winter Edition of Health Works will be published in June. If you wish to submit an article, please do so via email: communications@healthworkforce.com.au.

Mackay physio receives scholarship

In November, 2017 Lauren Neill applied for the Health Workforce Scholarship Program and was one of many allied health professionals who was awarded a scholarship to undertake further study in their field.

Tell us about your career so far...

I started my Physiotherapist journey in 2012 working at the Angliss Hospital in Ferntree Gully, Victoria. I was lucky enough to be paired with a wonderful mentor who introduced me to Women's Health, which became my passion. I moved to St Vincent's Hospital, Melbourne. That experience set me up for working in rural Queensland. Since 2014, I've been working at Physio Plus in Mackay.

You plan to study a Masters Degree; can you tell us more about it?

I'm studying a Master of Clinical Physiotherapy, majoring in Women's Health and Continence at Curtin University in Western Australia – Curtin is the only university to offer this course!

The course covers areas such as pelvic floor rehabilitation, women across the life span (pregnancy through to menopause), specialised placements and a research project to assist in developing evidence in the area.

"Upon completing this Masters Degree, I'll be the only Physiotherapist in many hundreds of kilometers to have this type of qualification."

What does this scholarship mean to you?

A Masters Degree in Women's Health and Continence has always been my career goal and ambition! This scholarship has made it possible to continue my journey towards specialisation in Women's Health.

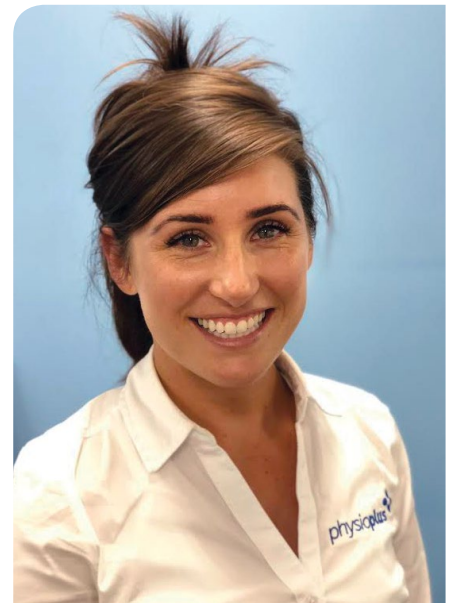
Through completing the Masters Degree how will this assist your employer Physio Plus and most importantly the community?

Women's Health, incontinence and pre/post-natal physiotherapy is one of the most evidence-based treatments that Physiotherapists can provide. The need for Physiotherapists specialised and

trained in women's health, continence and pelvic health is huge!

Physio Plus is growing its scope in this area. The skills I will gain and develop through study will be integral to this growth.

The communities in the greater Mackay and Whitsunday regions will be able to access continence and pelvic health services from specialised Physiotherapists. I'm so happy to give this rural community access to services they would otherwise have to travel long distances to find!



Applications Open!

We encourage post-graduate medical, nursing, allied health professionals and Aboriginal and Torres Strait Islander health workers throughout remote and rural Queensland to apply for the Health Workforce Scholarship Program to expand your professional knowledge and skills.

Check the website for more information and eligibility criteria.

Become a JFPP Mentor



“I’m passionate about rural medicine and all that it has to offer, and realise that a strong rural workforce requires doctors of the future to be passionate about it as well.”

Dr Elizabeth Hawkins grew up in Kiama, a small town with a population of 7,700 based along the New South Wales coast. From Kiama to Atherton in Far North Queensland, Liz now works as the Medical Superintendent at the Atherton Hospital and is a new Mentor in the John Flynn Placement Program (JFPP).

“I think of my career as a series of happy accidents”

Liz started her medical career in the new medical school at Newcastle University. “I loved being in Newcastle which was like a big country town, and enjoyed the degree, which had a strong rural focus,” Liz said.

With not much of an idea of a career path, but an urge to get out of Sydney after her initial post-grad years, she accepted a place with the RACGP training program and took a job in Nhulunbuy in North East Arnhem in the Northern Territory. “I felt privileged to live and work in such a beautiful place and get to know a little of the Yolngu people and their culture.”

Needing more skills in critical care Liz made the move to Cairns. She needed six months of rural practice to complete her training and it is in Atherton where six months turned into almost 25 years!

In Atherton she has had the opportunity to undertake a variety of roles in the hospital, general practice, and now works as the Medical Superintendent. It’s also in Atherton where she met her husband! “Having lived here now for quite a while I love the sense of community and belonging that I have found. It has been a wonderful place to raise a family.”

Her current role has a unique mix of administrative and clinical elements and ensures her days are varied and often unpredictable! “The medicine that I get to practice here allows me to use my full range of skills, and I regard it as a privilege to look after people that are part of the community in which I live.”

“I also have an active role with teaching – in our multidisciplinary simulation centre, with interns and GMT trainees, and with medical students.” It is the medical students that Liz is a JFPP Mentor for. The JFPP exposes students to a wide range of experiences in a rural setting, and gives them an opportunity to recognise the professional and lifestyle opportunities that living and working in a rural setting can bring. “I was surprised by how incredibly positive the experience was, with a wonderful student

who was enthusiastic and engaged...we are all looking forward to him coming back again this year.”

“I look back with gratitude at those who have given me the benefit of their wisdom and support over the years. I hope to be able to do the same for the next generation of doctors, and perhaps spark the enthusiasm and passion for all that a career in rural medicine has to offer.”



If you would like to be a JFPP Mentor, visit the website to get involved!



Image courtesy of Tourism and Events Queensland.

The countdown is on...

From 7-9 June, 2018 the RDAQ Conference is the place to be for partners, spouses and children of rural doctors!

The Family Program boasts a variety of fun activities for children that take place throughout the Southbank precinct. But the Family Program not only caters for children! The spouse and partner networking registration includes:

- Complimentary attendance at the conference official opening and keynote address,

- Welcome reception supper and drinks package,
- Friday night social ticket including dinner,
- Conference gala dinner and awards ticket.

The QRMFN is excited to announce Ian Townsend as the guest speaker for our Annual General Meeting on Friday 8 June. Ian is a journalist and radio documentary maker who

worked for many years with ABC Radio National. The AGM is open to all partners and spouses to attend.

Last but definitely not least will be the announcement of the 2018 Backbone of the Bush Award recipient at the David Horn Memorial Gala Dinner on the Saturday night.



Register
for the 2018
QRMFN Family
Program

RDAQ 2018 Rural Doctors Association of Queensland

COME TOGETHER

29th Annual Conference
BRISBANE CONVENTION & EXHIBITION CENTRE
7 - 9 JUNE 2018

conference.rdaq.com.au



Key Vacancies

General Practitioner Gladstone



- Fulltime General Practitioner
- Group practice within local Aboriginal and Islander Community Controlled Health Service
- Bulk billing practice
- Supported by experienced multi-disciplinary health team
- 40 hours per week, Monday to Friday
- Occasional community-based weekend work
- Located on the Central Queensland Coast

[See full ad here](#)

General Practitioner Mossman



[See full ad here](#)

General Practitioner Kingaroy



[See full ad here](#)

General Practitioner Mount Isa



[See full ad here](#)

Health Students, Save the Date!

Health Workforce Queensland, RDAQ Foundation and Queensland's Rural Health Clubs are excited to announce the date and location for the 2018 Joint Rural Health Club Weekend.

This year we are heading to Stanthorpe from Friday 5 to Sunday 7 October!

The JRHCW is an annual event that brings together multi-disciplinary health students from the four Rural Health Clubs of Queensland for a fun-filled weekend of community engagement, clinical activities and networking all designed to showcase the rural lifestyle. **Register through your Rural Health Club!**



Upcoming Workshops

Earn CPD points at one of our workshops...

Emergency Cardiology Workshop

19-20 May, 2018 | Cairns, QLD

Dr Spencer Toombes, senior staff physician at Toowoomba General Hospital, will use small group case discussions, interactive lectures, practical sessions and simulation scenarios to lead attendees through the emergency care of patients. Topics covered in the workshop include:

- > Chest pain
- > Arrhythmias
- > Heart failure
- > Cardio-Pulmonary Resuscitation (no assessment)
- > ECG interpretation

CPD and CME

RACGP: 40 Category 1 Points
ACRRM: 30 PRPD & 30 EM MOPS



Register
for the Emergency
Cardiology Workshop

Addiction Medicine Workshop

7 June, 2018 | Brisbane, QLD

This workshop will be held as a pre-conference workshop at the 2018 RDAQ Conference in Brisbane. Dr Christian Rowan, Dr Jim Finn and Dr Nikola Ognjenovits inform attendees on how to provide and coordinate the best holistic care for patients.

Topics include:

- > Up-scheduling of codeine
- > Managing drug and alcohol addiction
- > Managing the acute drug induced and violent patient



**REGISTER NOW
FOR EARLY BIRD
PRICES**

CPD and CME

RACGP: TBC
ACRRM: TBC



Register
for the Addiction
Medicine Workshop

More workshops announced for 2018

Emergency Paediatrics Workshop	21-22 July Cairns
Diabetes Workshop	18-19 August Gold Coast
Rural Emergency Medicine Workshop	7-9 September Brisbane
Emergency Mental Health Workshop	3-4 November Sunshine Coast

Health Works

Editor

Belinda Connolly

Contributors

Dr Elizabeth Hawkins
Lauren Neill

Subeditor

Chris Mitchell
Zena Horton

Photographers

James Laws
Tourism and Events Queensland



**Health Workforce
Queensland**

☎ 07 3105 7800
📠 07 3105 7801
✉ admin@healthworkforce.com.au

GPO Box 2523
Brisbane QLD Australia 4001
Level 13, 288 Edward Street
Brisbane QLD Australia 4000

🌐 healthworkforce.com.au